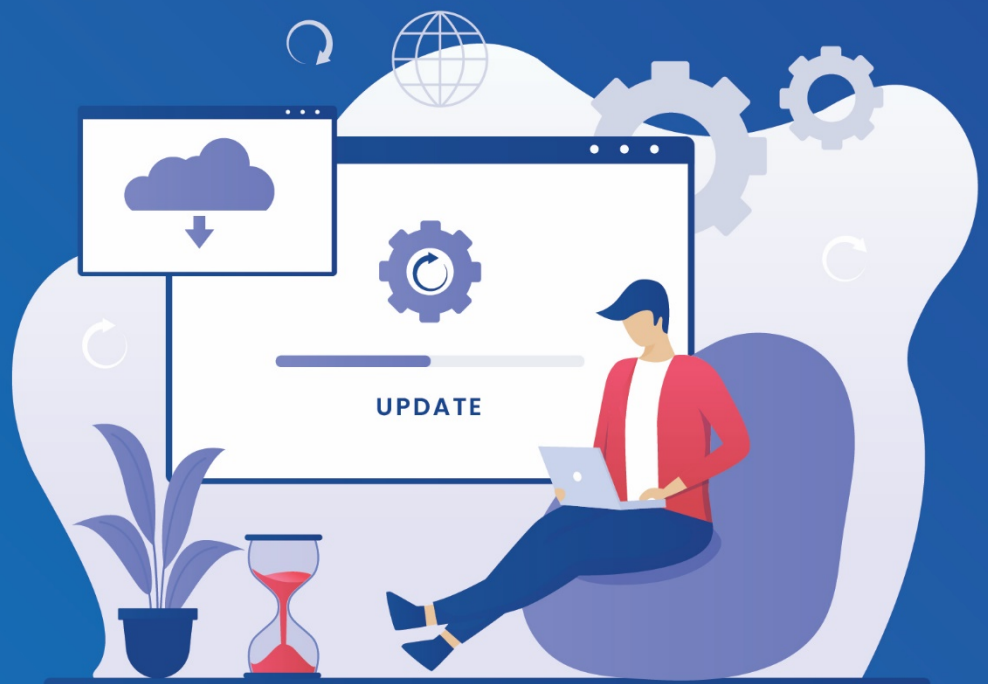


CloudMiner

Installation Document for Windows 10 OS

Support: Please reach cloudminersupport@ritesoftware.com for any installation support.

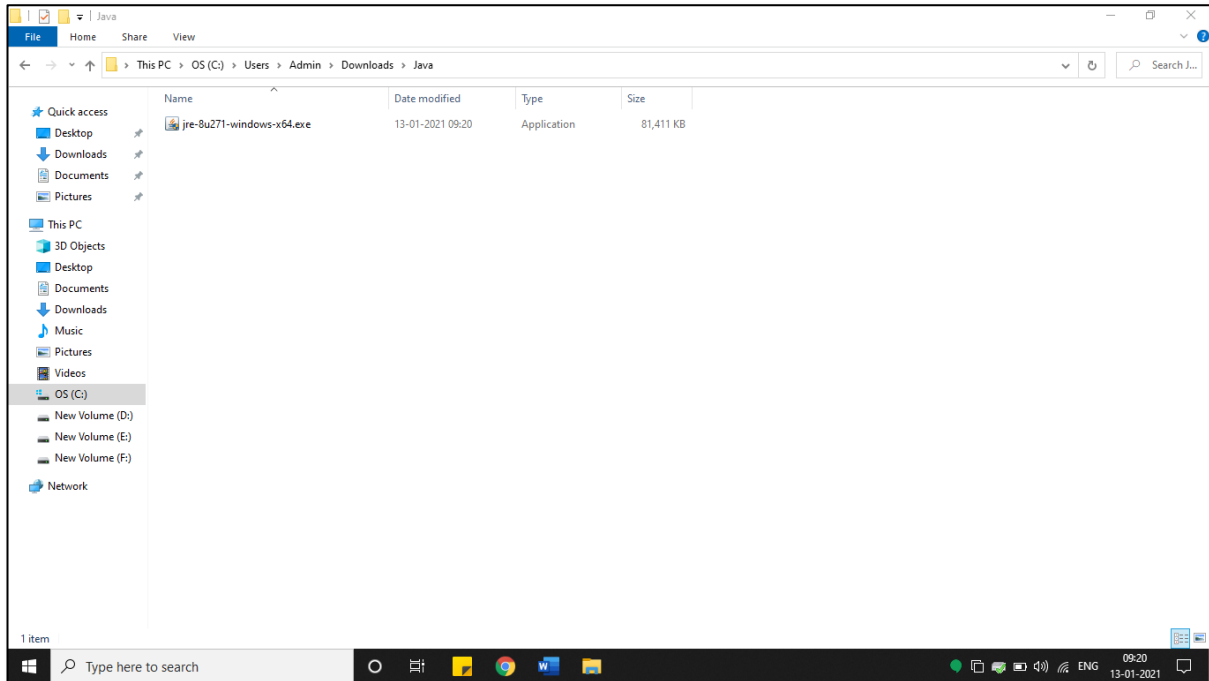


Pre-requisites:

The required version of JRE for Cloud Miner is Java 1.8.

If you are not having JRE or if you have lesser version, please visit the link and download the JRE (Java Runtime Environment) before proceeding further

<https://www.oracle.com/java/technologies/javase-jre8-downloads.html>

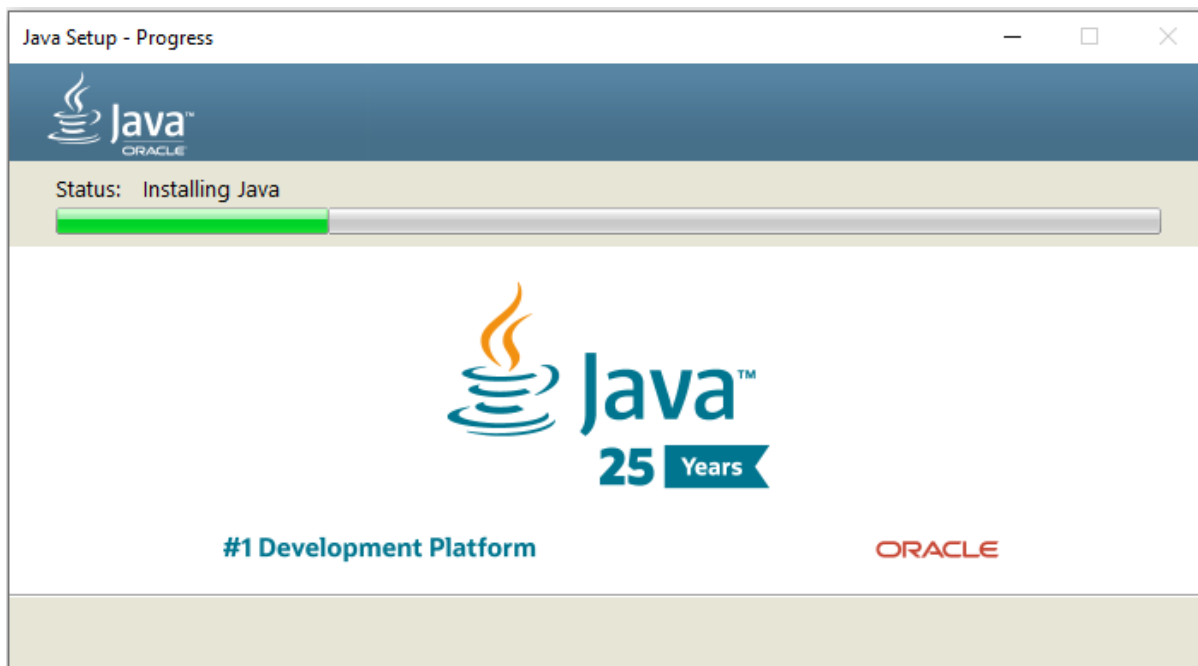


Select the downloaded file and right mouse click on it to open advanced options. Please click on **Run as Administrator**.

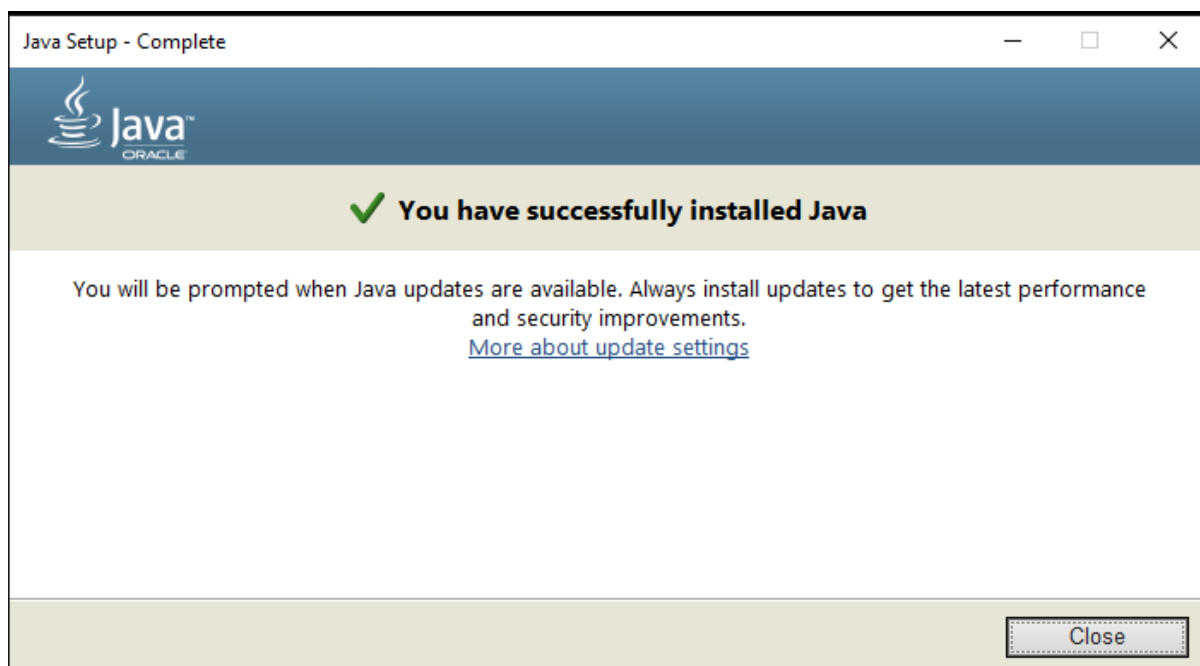
After this, please click **Yes** button on the **UAC prompt**. This will start the installation process.



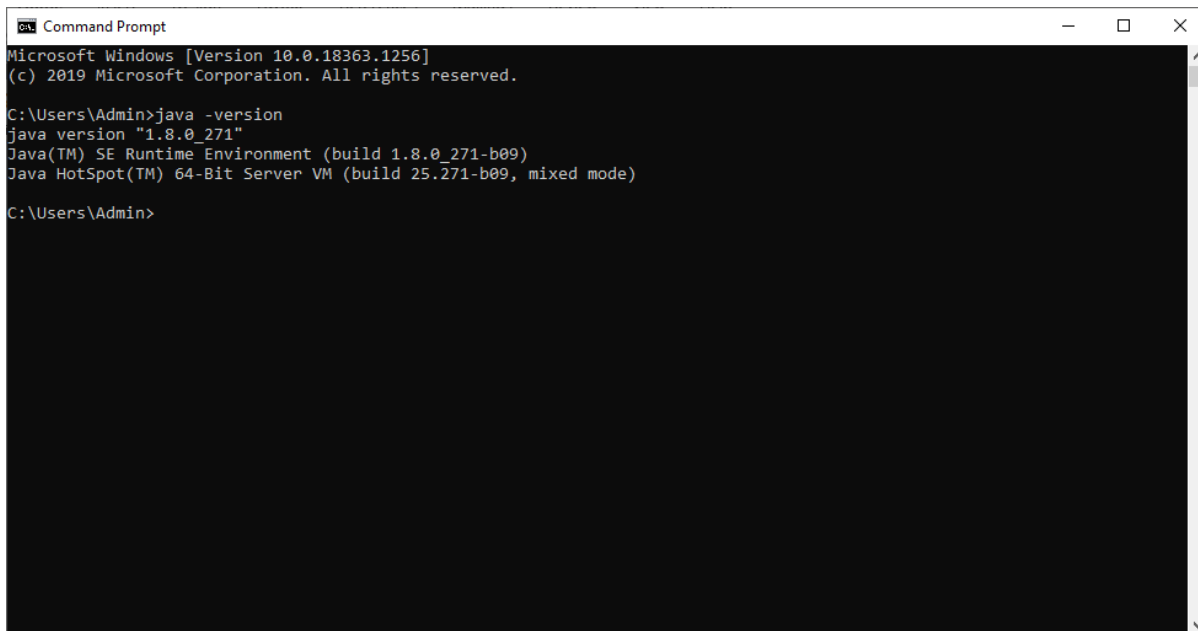
Click on **Install** button and the installer proceeds further.



After installation is done you will be able to see this window.



To check if JRE is working properly, please open command prompt and type in the following command.



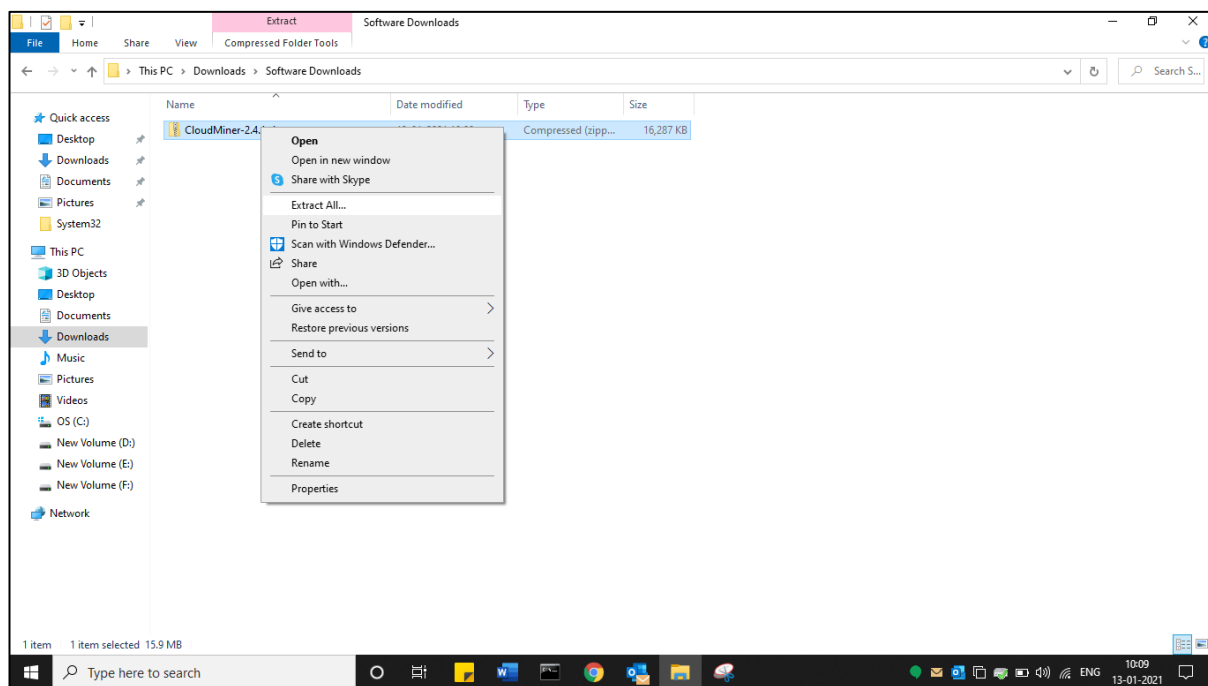
```
Command Prompt
Microsoft Windows [Version 10.0.18363.1256]
(c) 2019 Microsoft Corporation. All rights reserved.

C:\Users\Admin>java -version
java version "1.8.0_271"
Java(TM) SE Runtime Environment (build 1.8.0_271-b09)
Java HotSpot(TM) 64-Bit Server VM (build 25.271-b09, mixed mode)

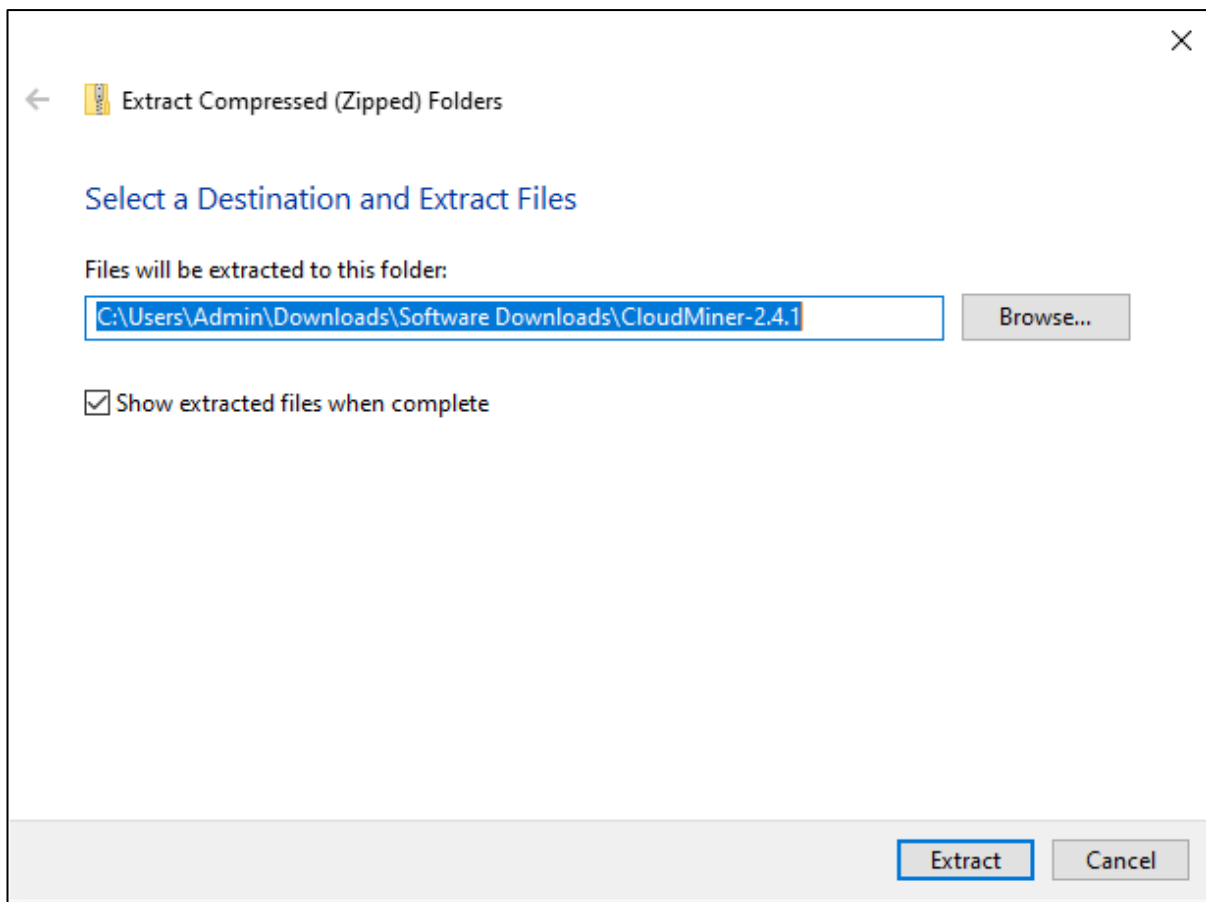
C:\Users\Admin>
```

Cloud Miner Installation:

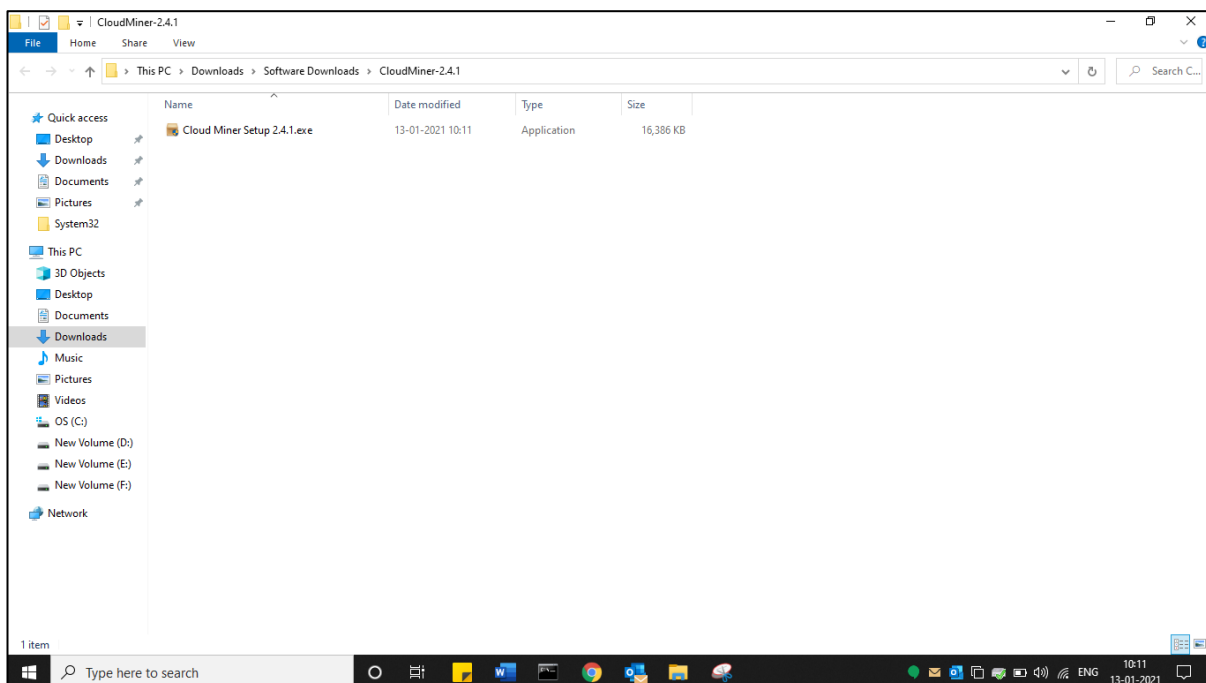
Unzip the downloaded **CloudMiner** file using built in **Windows Zip Extractor**.



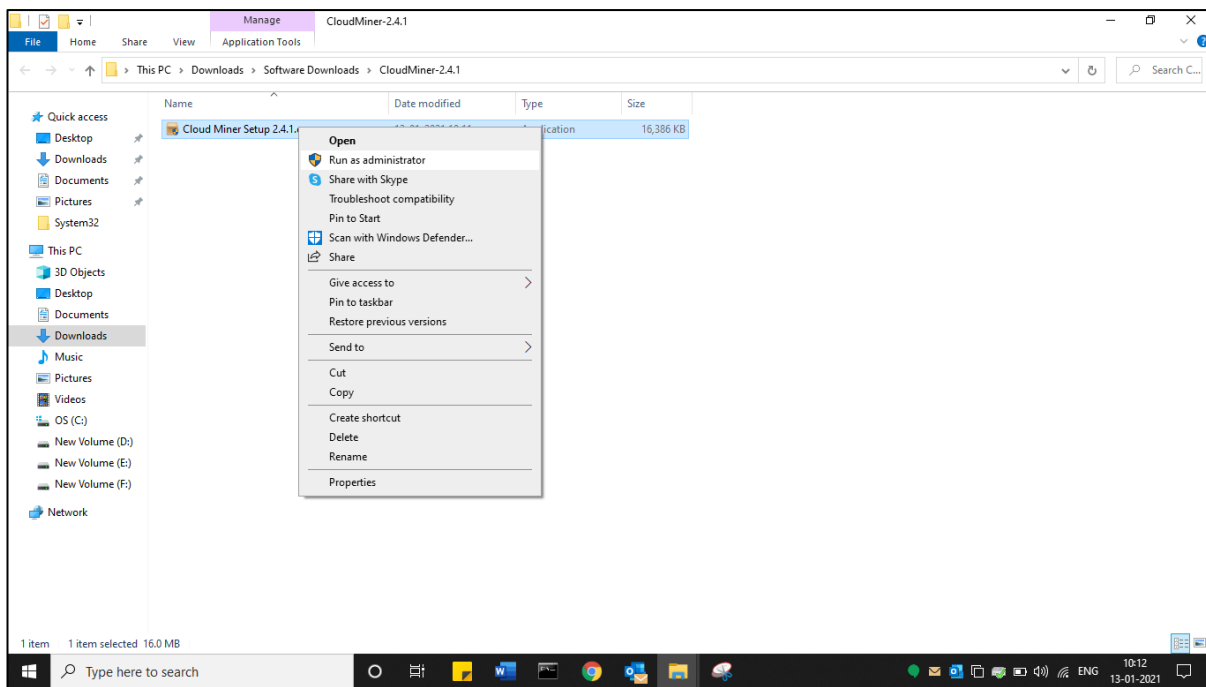
You can extract it to any location of your choice. Click on **Extract** button to start extraction process.



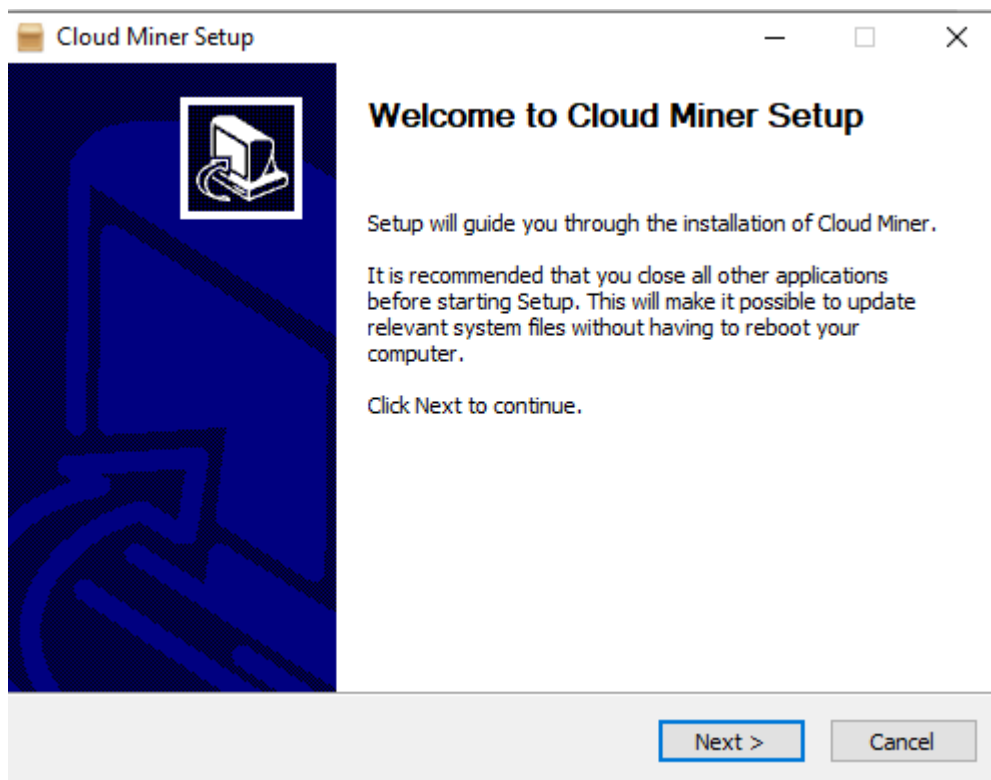
After extraction process completes you will be re-directed to the extracted folder.



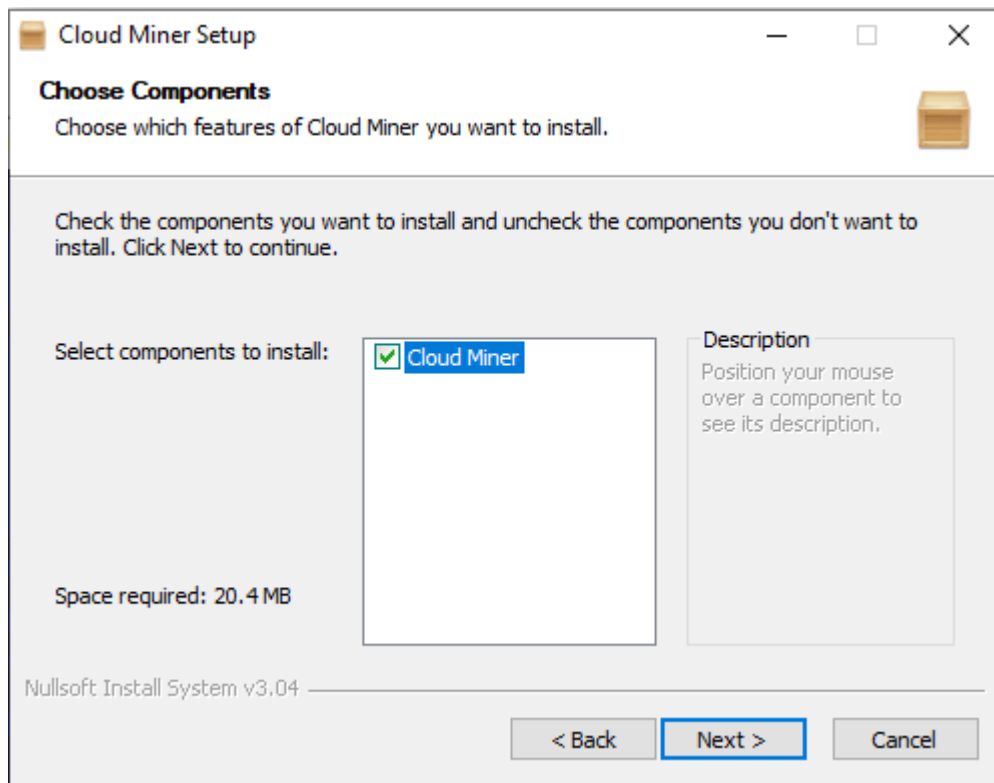
Right Click on the **Cloud Miner Setup 2.4.1.exe** and click on **Run as Administrator**.



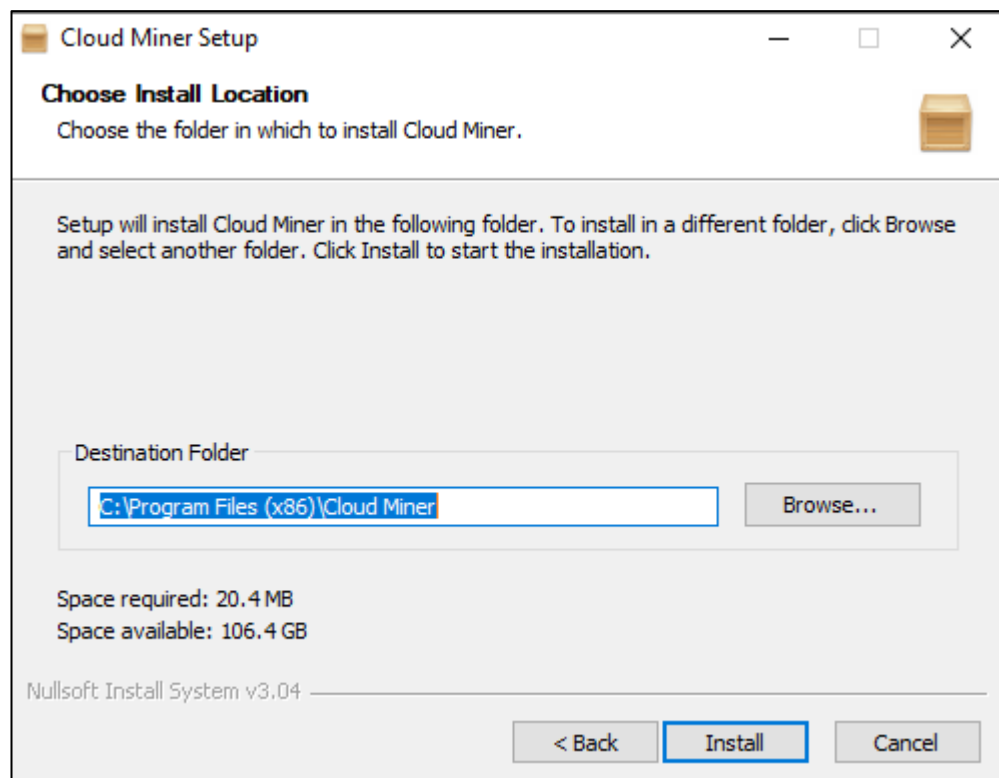
Click **Yes** button in the **UAC** prompt.



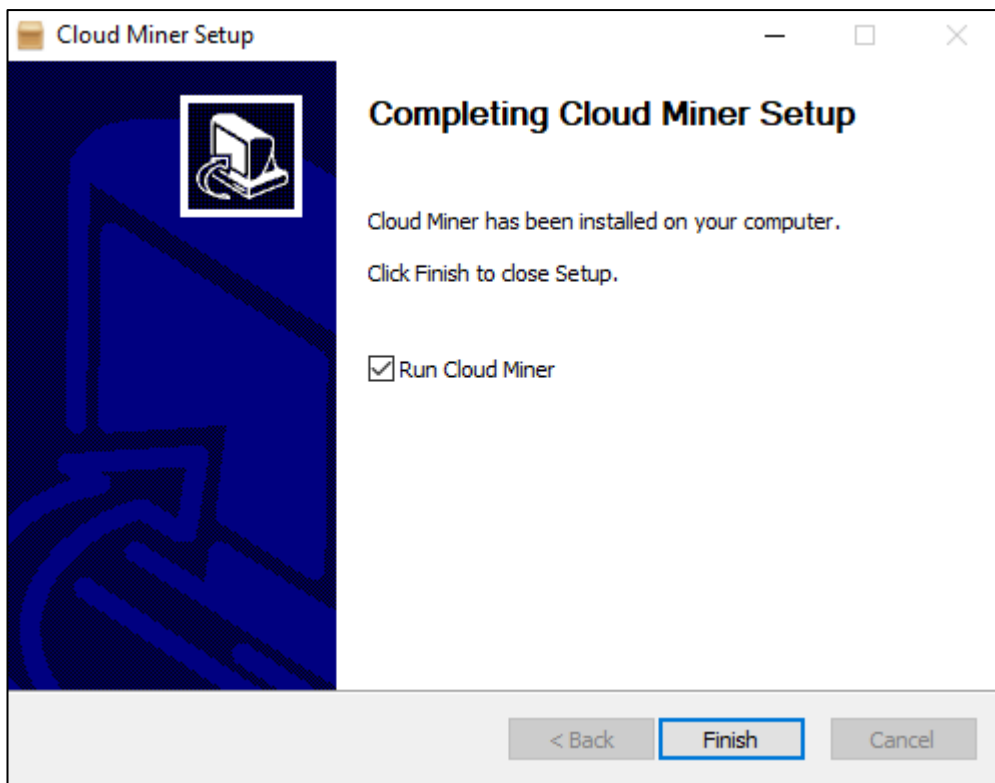
Click on **Next** button.



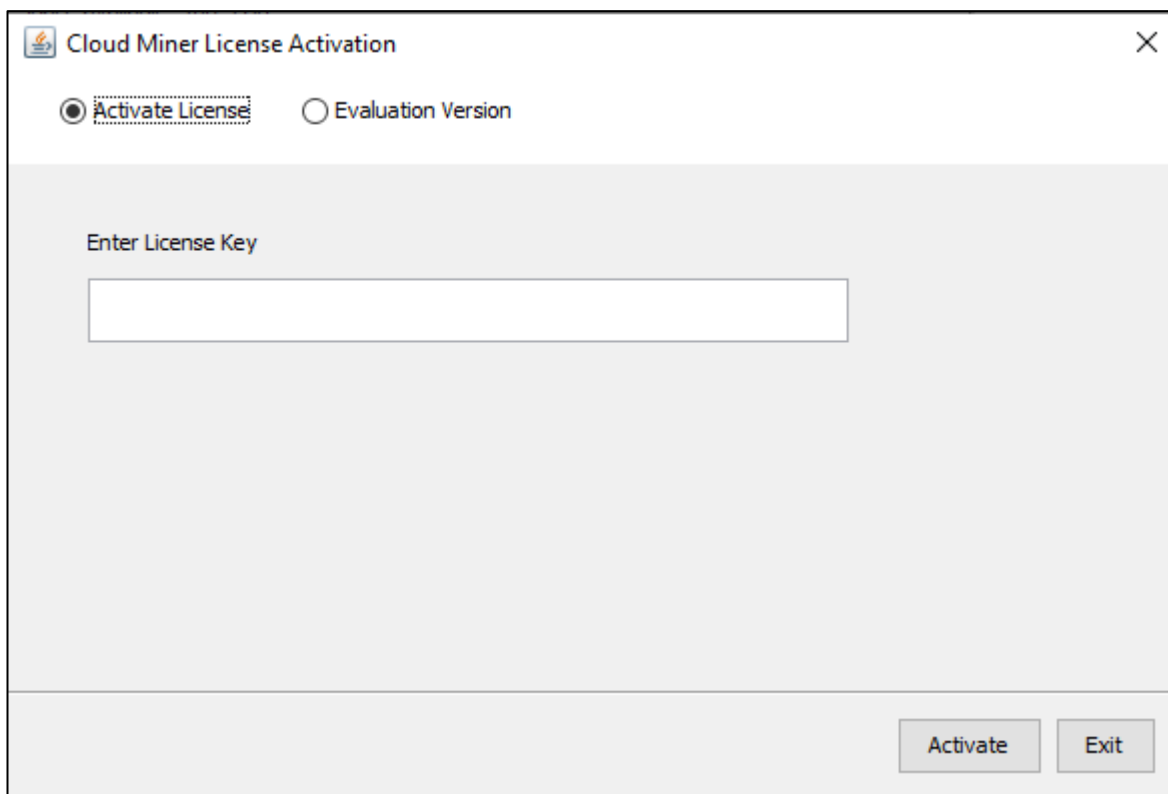
Click on **Next** button.



Click on **Install** button to start installation process.

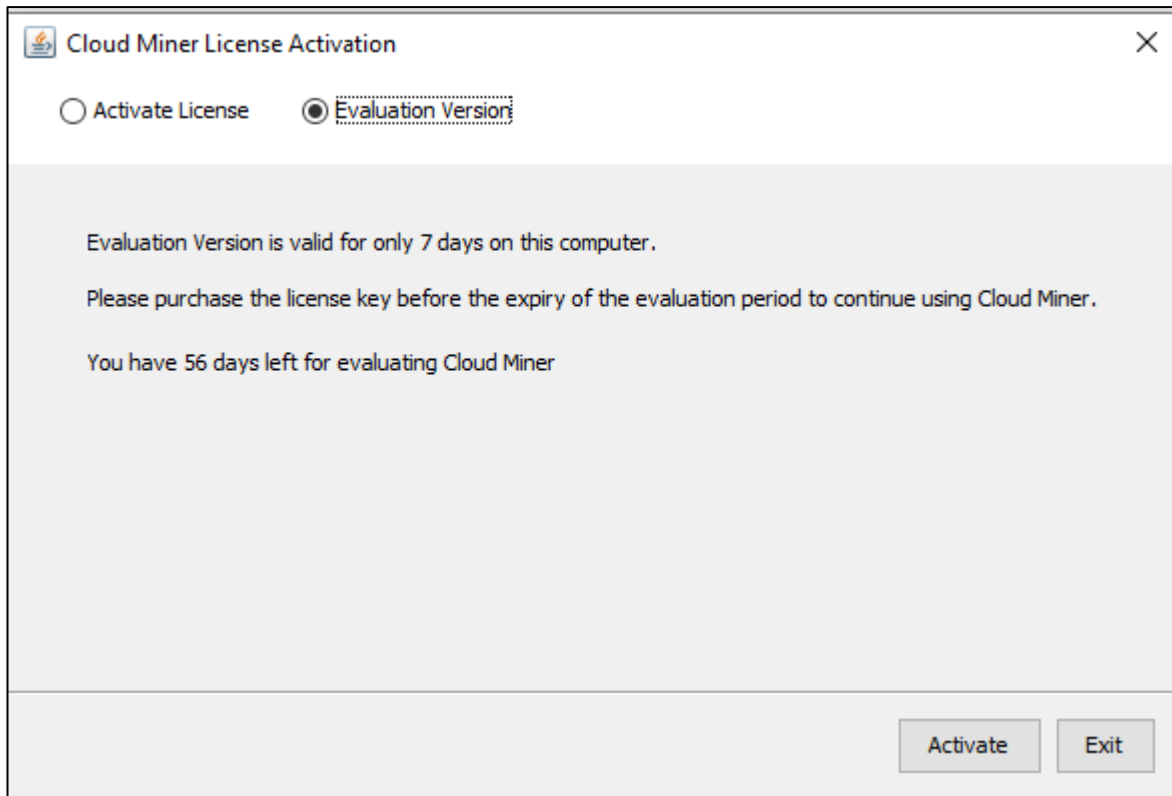


Click on **Finish** button.



Choose among **Activated License** or **Evaluation Version**.

To Activate full version please **enter the supplied Key** and **Click on Activate**.



To start evaluation please choose **Evaluation Version** and click on **Activate**.

